



# 02

**DOBRAĐIÇAS**  
HINGES  
*CHARNIÈRES*

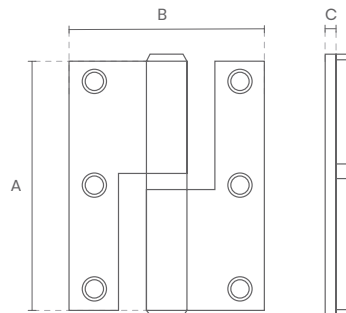




REF \ 73



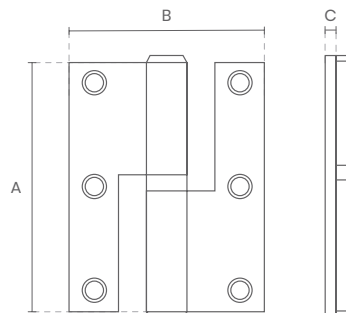
REF.	A x B x C
73 x 3"	75 x 57 x 2
73 x 3" 1/2	90 x 65 x 2,5



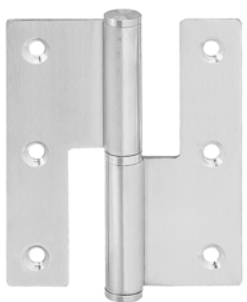
REF \ 1/2 BALANÇO



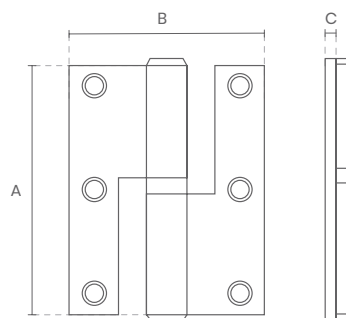
REF.	A x B x C
3"	75 x 60 x 2,5
3" 1/2	90 x 70 x 2,5



REF \ BALANÇO



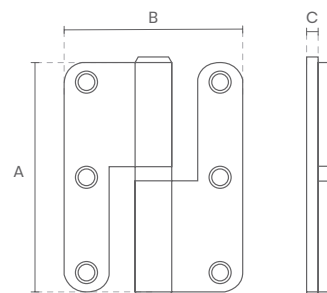
REF.	A x B x C
3" 1/2	90 x 75 x 2,5



REF \ 1/2 BALANÇO CANTOS REDONDOS



REF.	A x B x C
3"	75 x 60 x 2,5
3" 1/2	90 x 70 x 2,5

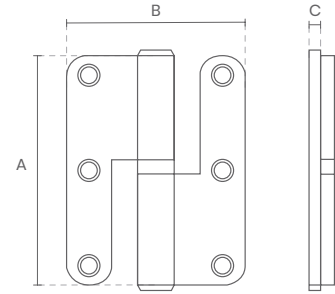


REF \ **BALANÇO** CANTOS REDONDOS



**REF.      A x B x C**

3" 1/2      90 x 75 x 2,5



REF \ **415**



**REF.      A x B x C**

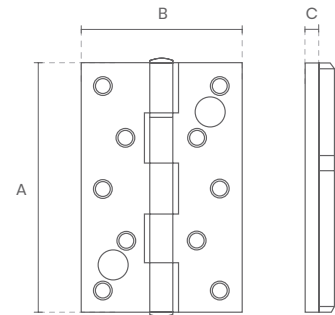
415      125 x 76 x 3

■ ACABAMENTOS FINISHING

**Inox**  
Stainless steel  
*Acier inoxydable*

**Latão polido**  
Polished brass  
*Laiton poli*

**Bronze**  
Bronze  
*Bronze*



REF \ **2201**



**MEDIDAS**  
MEASURES  
MESURES

120

180

■ ACABAMENTOS FINISHING

**Alumínio**  
Aluminum  
*Aluminium*

REF \ **2202**



**MEDIDAS**  
MEASURES  
MESURES

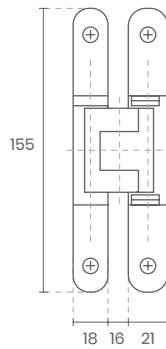
120

180

■ ACABAMENTOS FINISHING

**Alumínio**  
Aluminum  
*Aluminium*

REF **TE240**

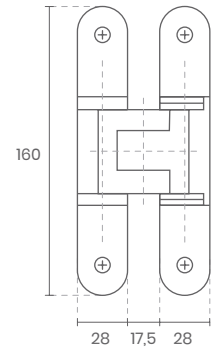
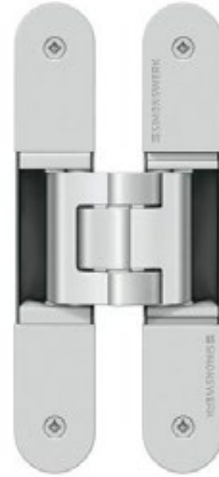


■ CARACTERÍSTICAS GERAIS *GENERAL FEATURES*

Sistema de dobradiça completamente oculto  
 Para armações de madeira, aço ou alumínio  
 Capacidade de carga: 60Kg  
 Ângulo de abertura: 180°



REF **TE340**

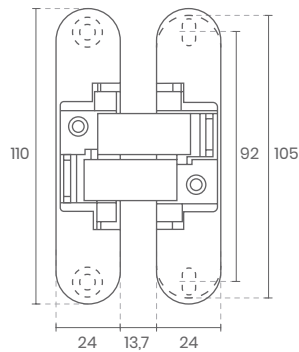
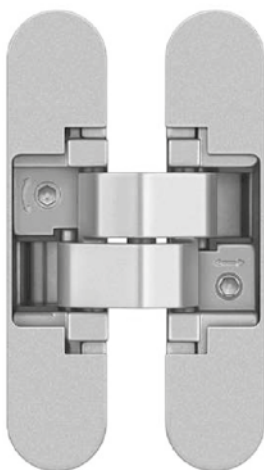


■ CARACTERÍSTICAS GERAIS *GENERAL FEATURES*

Sistema de dobradiça completamente oculto  
 Para armações de madeira, aço ou alumínio  
 Capacidade de carga: 80Kg  
 Ângulo de abertura: 180°



REF **ANI50**

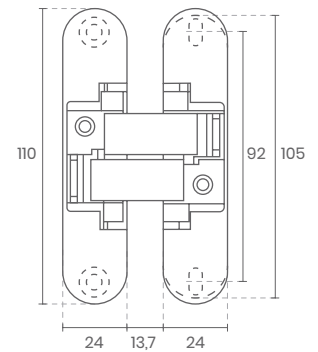
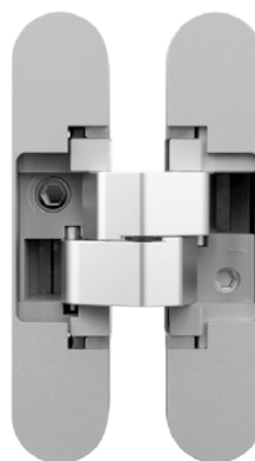


■ CARACTERÍSTICAS GERAIS *GENERAL FEATURES*

Sistema de dobradiça completamente oculto  
 Para armações de madeira  
 Capacidade de carga: 60Kg  
 Ângulo de abertura: 180°



REF **ANI70**



■ CARACTERÍSTICAS GERAIS *GENERAL FEATURES*

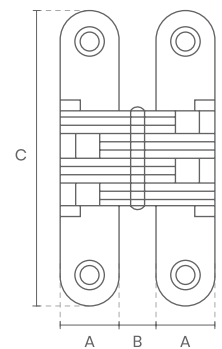
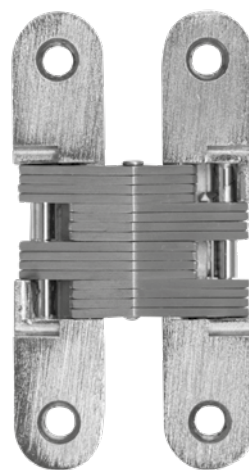
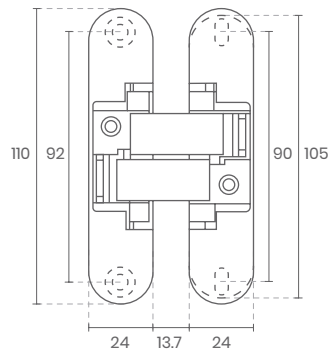
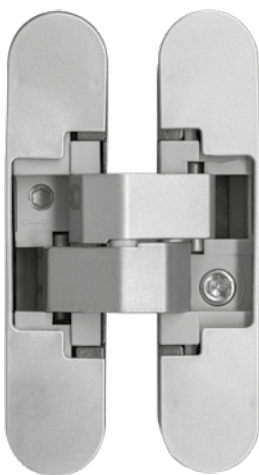
Sistema de dobradiça completamente oculto  
 Para armações de madeira  
 Capacidade de carga: 40Kg  
 Ângulo de abertura: 180°





REF \ 2010

REF \ DOBRADIÇA INVISÍVEL



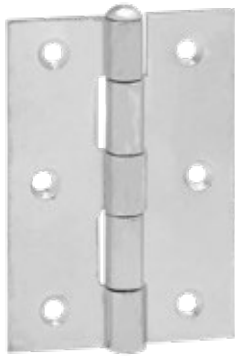
■ CARACTERÍSTICAS GERAIS GENERAL FEATURES

Capacidade de carga: 25Kg  
 Ângulo de abertura: 180°

A (mm)	B (mm)	C (mm)
12,7	7,5	45
12,7	7,5	60
15,8	12	70
19,5	11,5	95



REF 1838



MEDIDAS MEASURES MESURES  
1" 1/2 / 2" / 2" 1/2 / 3" / 3" 1/2 / 4"

REF 85



MEDIDAS MEASURES MESURES  
x2 / 2" / 2" 1/2 / 3" / 3" 1/2 / 4"

■ ACABAMENTOS FINISHING

-  **Inox**  
Stainless steel  
Acier inoxydable
-  **Lacado Bronze**  
Bronze lacquer  
Laquée bronze
-  **F. Bronze**  
F. Bronze  
F. Bronze
-  **Zinco**  
Zinc  
Zinc

REF \ **403**



**MEDIDAS MEASURES MESURES**  
2" 1/2 / 3" / 3" 1/2 / 4"

REF \ **400**



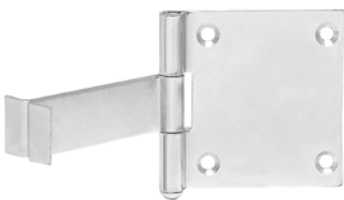
**MEDIDAS MEASURES MESURES**  
2" 1/2 / 3" / 3" 1/2

REF \ **17**



**MEDIDAS MEASURES MESURES**  
2" / 2" 1/2 / 3" 1/2

REF \ **57**



**MEDIDAS MEASURES MESURES**  
1" 1/2 / 2" / 2" 1/2 / 3" / 3" 1/2

REF \ **59**



**MEDIDAS MEASURES MESURES**  
2" / 2" 1/2 / 3"

REF \ **61**



**MEDIDAS MEASURES MESURES**  
2" 1/4 / 2" 1/2 / 2" 3/4 / 3" / 3" 1/2

REF \ **816**



**MEDIDAS MEASURES MESURES**  
1" / 1" 1/4 / 1" 1/2 / 2" / 2" 1/4 / 2" 1/2 / 3"

REF \ **PIANO**



■ ACABAMENTOS FINISHING

**Latão Polido**  
Polished brass  
Laiton poli

**Inox**  
Stainless steel  
Acier inoxydable